

295 Wyckoff Avenue

Bushwick, Brooklyn, NY

Location:

Between Grove Street and Linden Street

Floors:

Ground Level: 1,700 SF

Backyard: 700 SF

Lower Level: 800 SF

Frontage:

20 FT on Wyckoff Avenue

Ceiling Heights:

12 FT

Price:

Upon Request

Highlights:

- Property is located on highly-trafficked Wyckoff Avenue, a main retail corridor in Bushwick.
- Additional 300 SF structure in the yard can be utilized as storage space or for retail.
- **L** & **M** trains are located two blocks away at Myrtle-Wyckoff Aves station.
- Currently the retail is built-out as a café with a new glass storefront, HVAC and ADA bathroom installed in the space.
- All uses considered.



Neighboring Tenants:



Contact Olmsted Leasing Team



Harrison Balisky
516-672-4493
hb@olmstedre.com

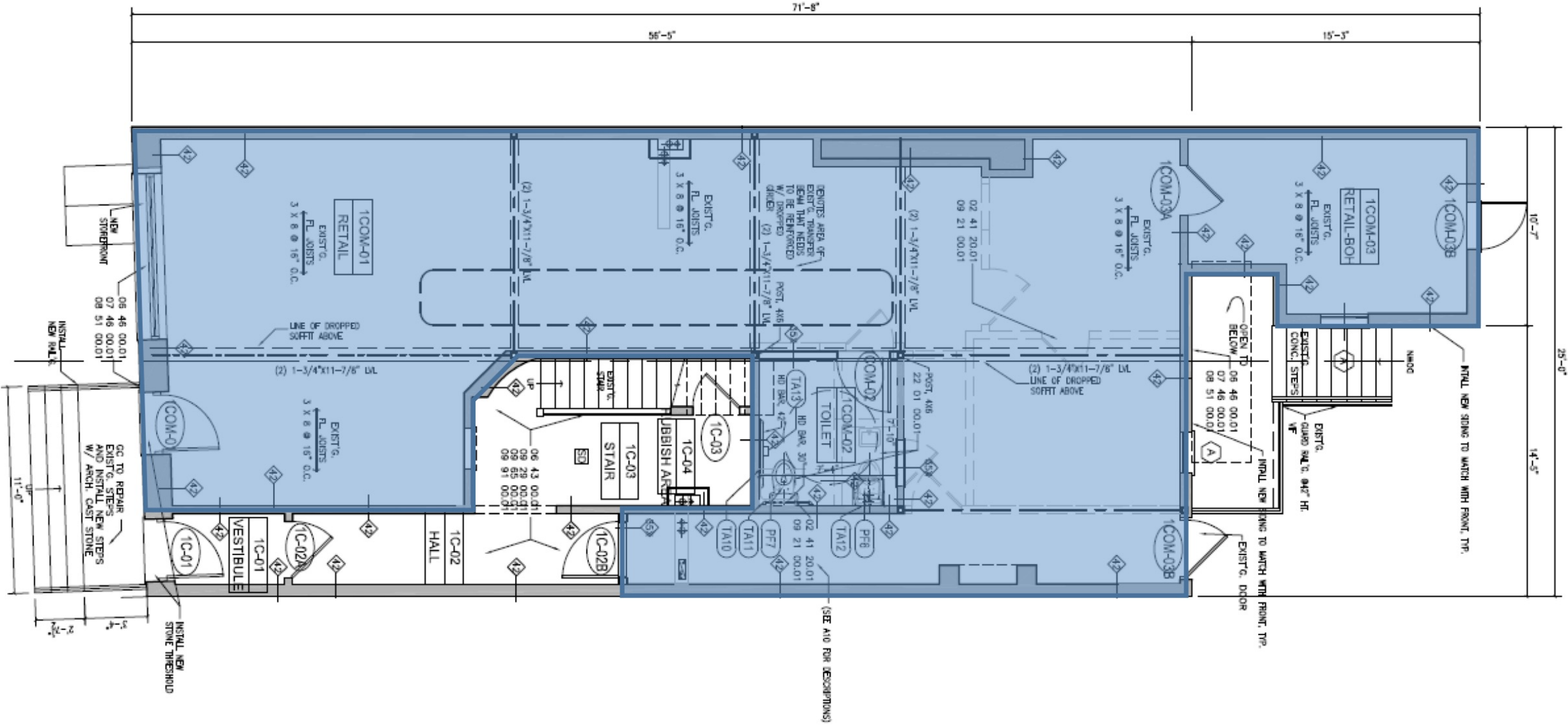
Brad Krosser
862-368-7271
bk@olmstedre.com

Photos



Floor Plan

Wyckoff Avenue



Public Transportation Map

Annual Subway Ridership

L and **M** trains are two blocks away at **Myrtle-Wyckoff Avenue** station with 4,276,366 annual ridership

