

141 North 6th Street

Williamsburg, Brooklyn, NY

Location: Between Bedford Avenue and Berry Street


Ground Level: 3,827 SF

Frontage: 40 Feet on North 6th Street

Ceiling Height: 20 Foot Tall on Ground Floor

Rent: Upon Request

Highlights:

- Positioned in the busiest fashion corridor with strong national tenants
- 40 FT of frontage creates great exposure
- Williamsburg has a strong retail shopping, eateries, nightlife, office and residential market, and tourists
- All uses are considered
-  train station is located one block away at Bedford Ave with 9,892,516 annual ridership
- Space delivered in white-boxed condition with HVAC, ADA Bathrooms



NEIGHBORING TENANTS:



s a n d r o m a j e
PARIS

BIRKENSTOCK

LE LABO

EVERLANE



lululemon

WARBY
PARKER

Contact Leasing Team

Harrison Balisky
516-672-4493
hb@olmstedre.com

Brad Krosser
862-368-7271
bk@olmstedre.com

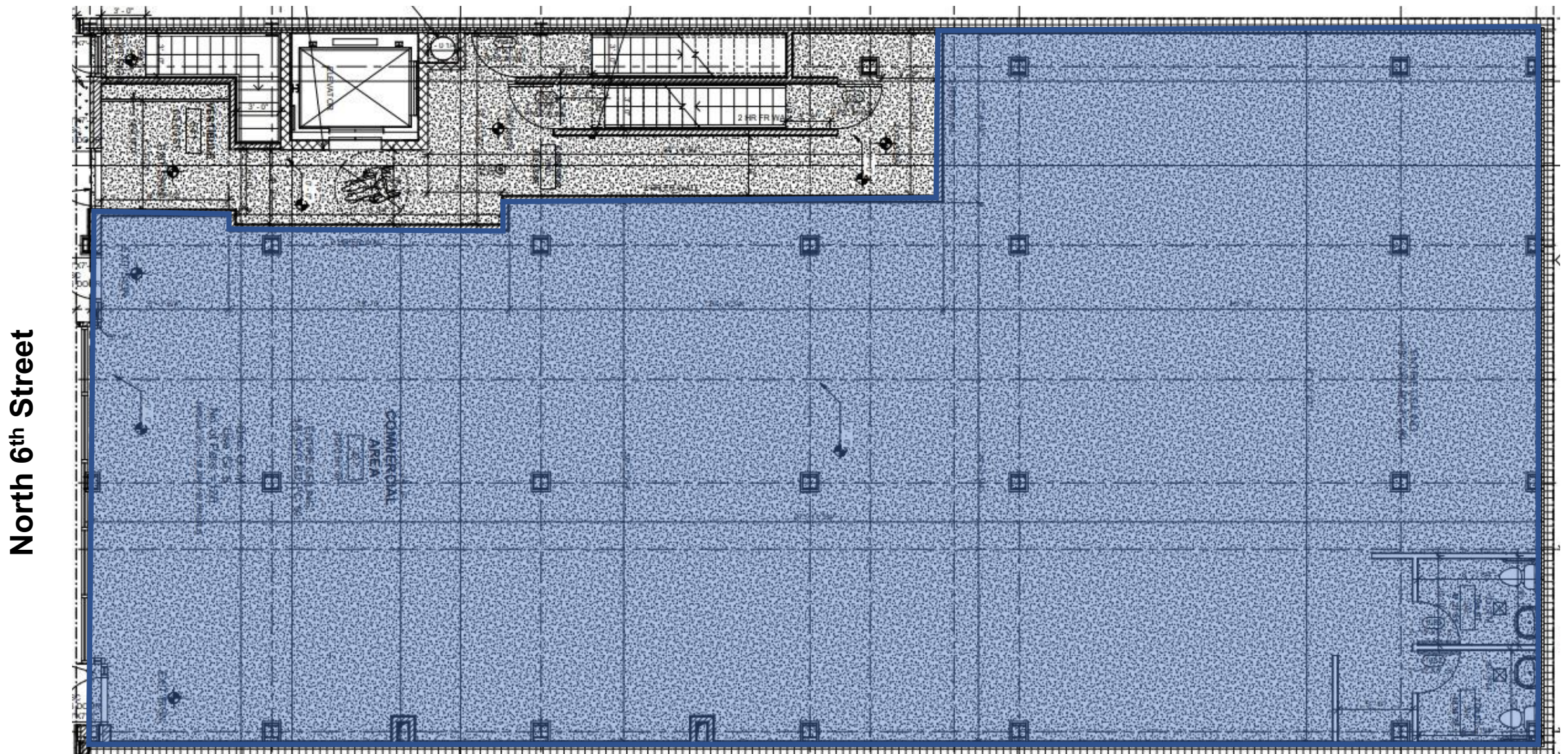




141 North 6th Street

Williamsburg, Brooklyn, NY

Floor Plan



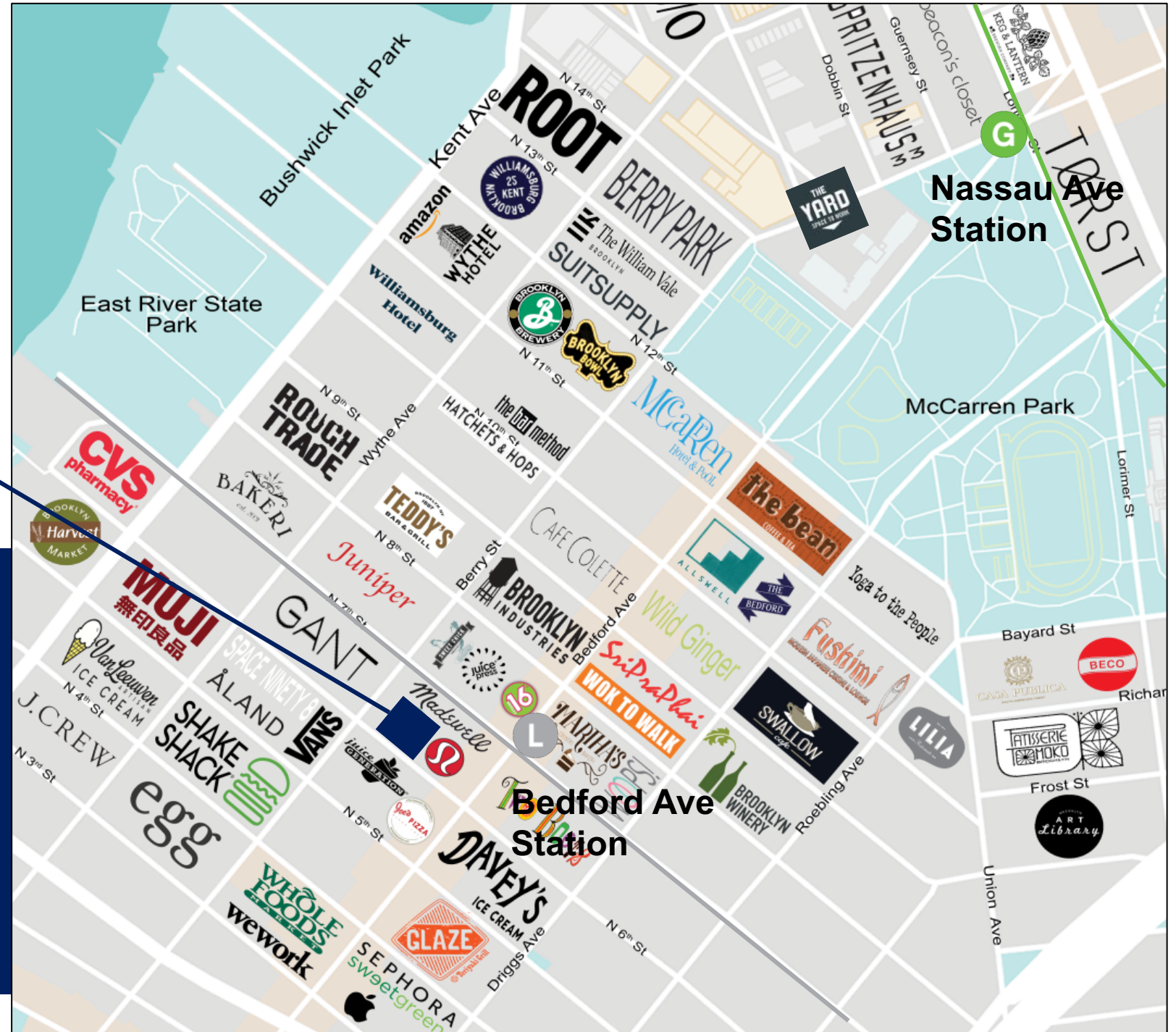
Ground Level



141 North 6th Street

Williamsburg, Brooklyn, NY

Retail Map



Annual Subway Ridership

- L** train is 500 FT away from **Bedford Avenue** station with 9,892,516 annual ridership
- G** train is 0.6 miles away from **Nassau Avenue** station with 2,880,235 annual ridership



Williamsburg

Demographics - North Williamsburg	
Population within 1 Mi Radius	155,726
Average Population Age	36 Years
Population Growth Since 2010	25%
Average Household Income within 1 Mi Radius	\$108,276
Total Businesses within 1 mi Radius	4,709
Total Expenditure Within 1 Mi Radius	\$1.2 Billion
L-Train Ridership at Bedford Avenue Stop	9.9 Million Riders Annual
Daily Pedestrians on Bedford Avenue	25,000
New residential units under development in Williamsburg over the next 5 years	8,000

