

118 North 11th Street

Williamsburg, Brooklyn, NY

Location:

Between Wythe Avenue & Berry Street

Hecla 4th Floor:

5,450 SF (Divisible)

Ceiling Height:

11.5 FT

Highlights:

- Newly renovated landmarked building located in the heart of Williamsburg
- Private lobby with elevator access
- HVAC system, fire sprinkler system, and Verizon Fios installed in each unit
- Located in a district with strong nightlife and entertainment with neighboring tenants such as *Brooklyn Bowl*, *Brooklyn Brewery*, and *Hatchets & Hops*
- Surrounded by five major hotels – *The Williamsburg Hotel*, *Wythe Hotel*, *The William Vale*, *The Hoxton*, and *McCarren Hotel & Pool*



Neighboring Tenants:



Contact Exclusive Leasing Team



Harrison Balisky
516-672-4493
hb@olmstedre.com

Brad Krosser
862-368-7271
bk@olmstedre.com



118 North 11th Street

Williamsburg, Brooklyn, NY

Photos





118 North 11th Street

Williamsburg, Brooklyn, NY

Photos



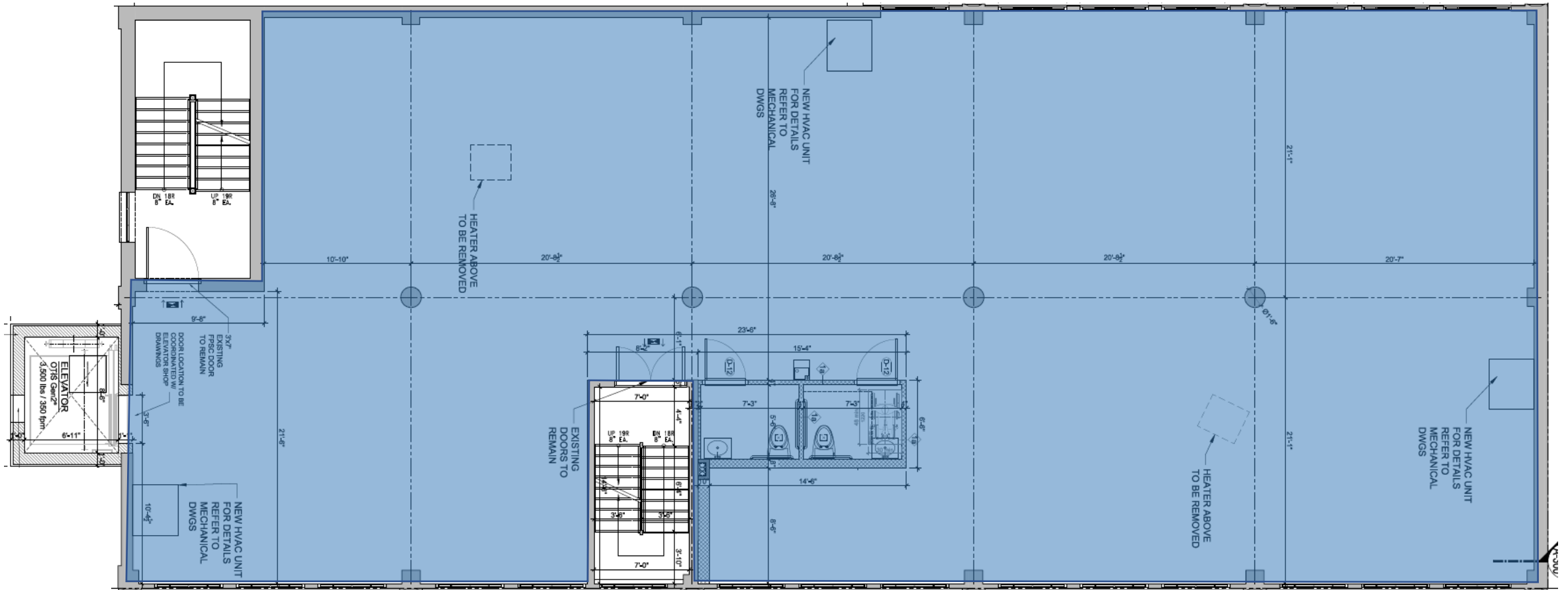
All information is from sources deemed reliable. No representation is made and we do not guarantee the accuracy of any information provided. All information must be independently verified. The value of any real estate investment is dependent on a variety of factors and should be evaluated carefully by prospective purchasers/ or tenants.



118 North 11th Street

Williamsburg, Brooklyn, NY

Hecla Office Floor Plates 3 - 4th Floor:



Available: (Divisible)

4th Floor: 5,450 RSF

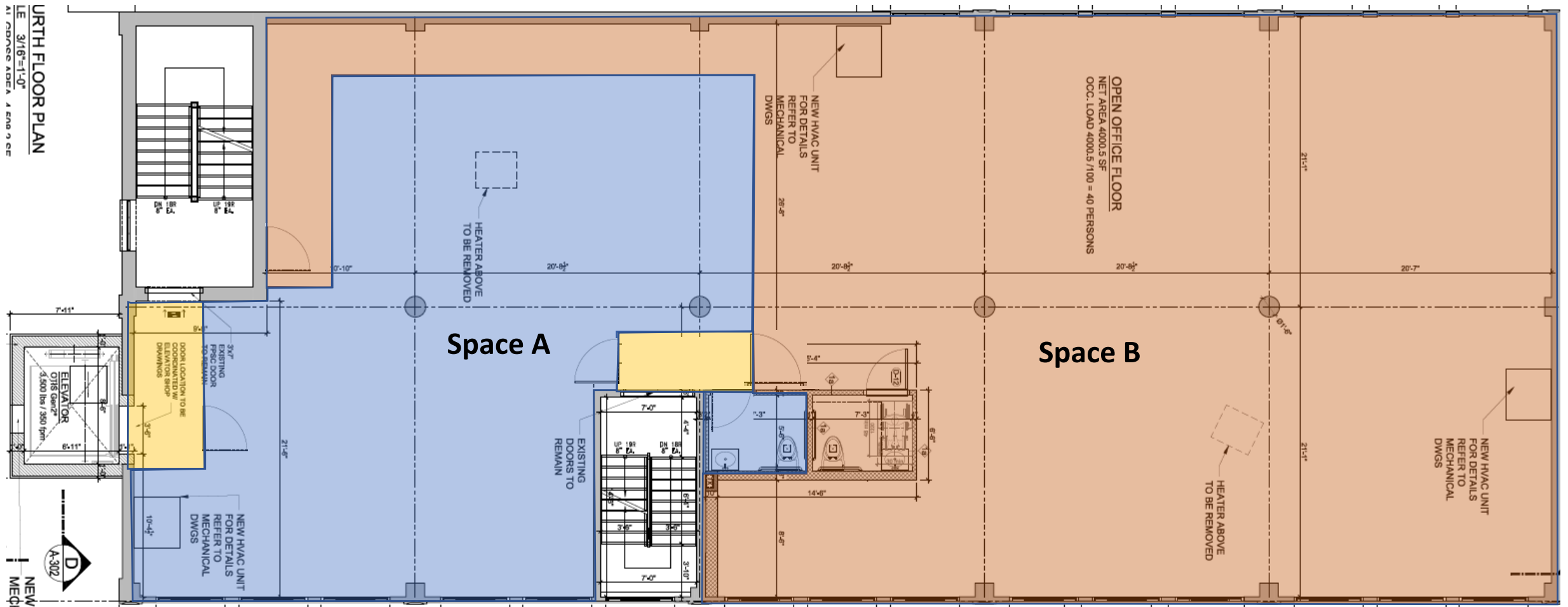
North 11th Street



118 North 11th Street

Williamsburg, Brooklyn, NY

Hecla Office Floor Plates 3 - 4th Floor: Proposed Divisions



Available: (Divisible)

Space A: 1,888 RSF

Space B: 3,565 RSF

North 11th Street



118 North 11th Street

Williamsburg, Brooklyn, NY

Retail Map



Annual Subway Ridership

L train is 5 min away at **Bedford Avenue** station with 9,892,516 annual ridership

G train is 8 min away at **Nassau Avenue** station with 2,880,235 annual ridership